

PROMOTING CAMPUS CONNECTIVITY AND COMMUNITY STARTING IN LENNOX TOWN CENTER

1. Pedestrian Bridge

This covered pedestrian bridge offers safe clearance over river and highway from OSUs campus and leads into the heart of Lennox. Features a lookout over the river, separated paths for bicycle and pedestrian travel, and gentle slopes.

2. Olentangy River

The Olentangy River becomes a highlight of travelling over the pedestrian bridge to Lennox.

3. Olentangy Bike Trail

This greenway trail links downtown to Worthington Hills, covering 13.75 miles. Trail users will bring a variety of business to Lennox.

4. State Route 315

315 offers high visibility of the town center to car-traveling consumers. On the other hand, it is a major impence to any travelling via alternative methods.

5. Olentangy River Road

This road allows relatively high speed traffic and sparse crosswalks.

6. Landing & Bike Corral

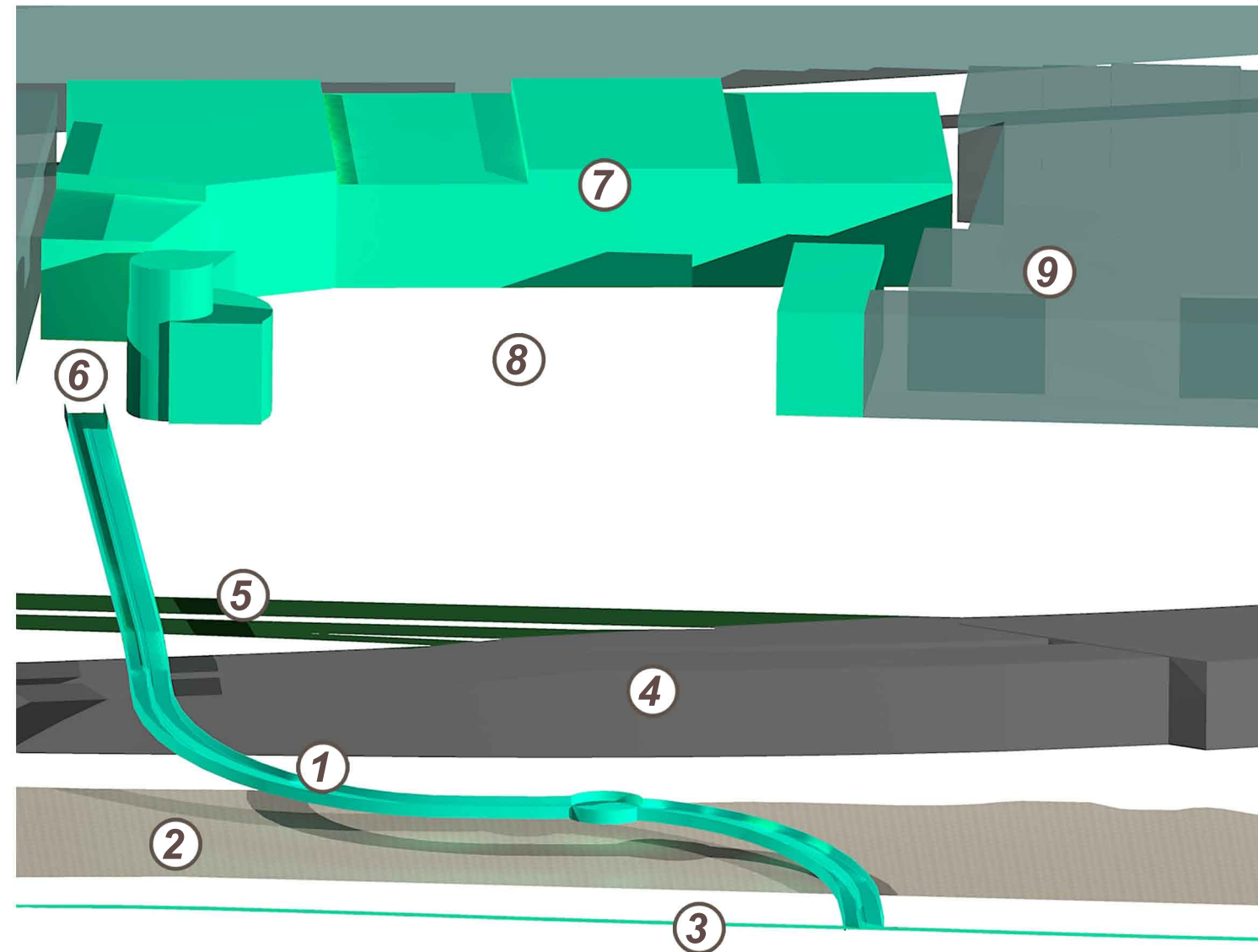
This corral is generally hidden from view and allows for bicycle parking.

7. Recessed Store Front

Recessing storefronts along the rail allows for increased density and additional retail space. Recommended to add a bicycle store, & mid/upper dining options.

8&9. Anchors / Multipurpose Square

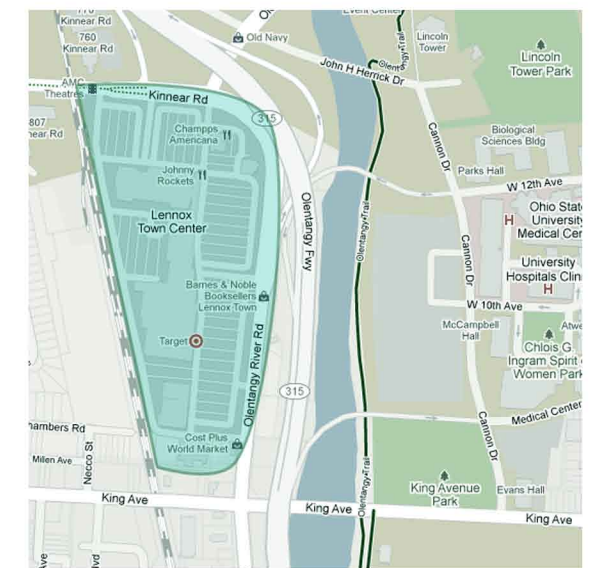
Reclaimed space is now used as an open meeting place. Allows for traffic between proposed side entrances of anchor stores and encourages intermingled shopping. Decorated with seating, plant life, and a fountain or sculpture.



Why don't more students shop at Lennox?

Narrow sidewalks, non-existent bike routes, a river, and a highway laced with speeding cars all influence students to think that this one-stop shopping place is just one place they'd rather not stop. It's just not easy to get there. *But a bridge could change everything.*

Current Site Layout



Demographics for the Primary Trade Area



Stores Available

